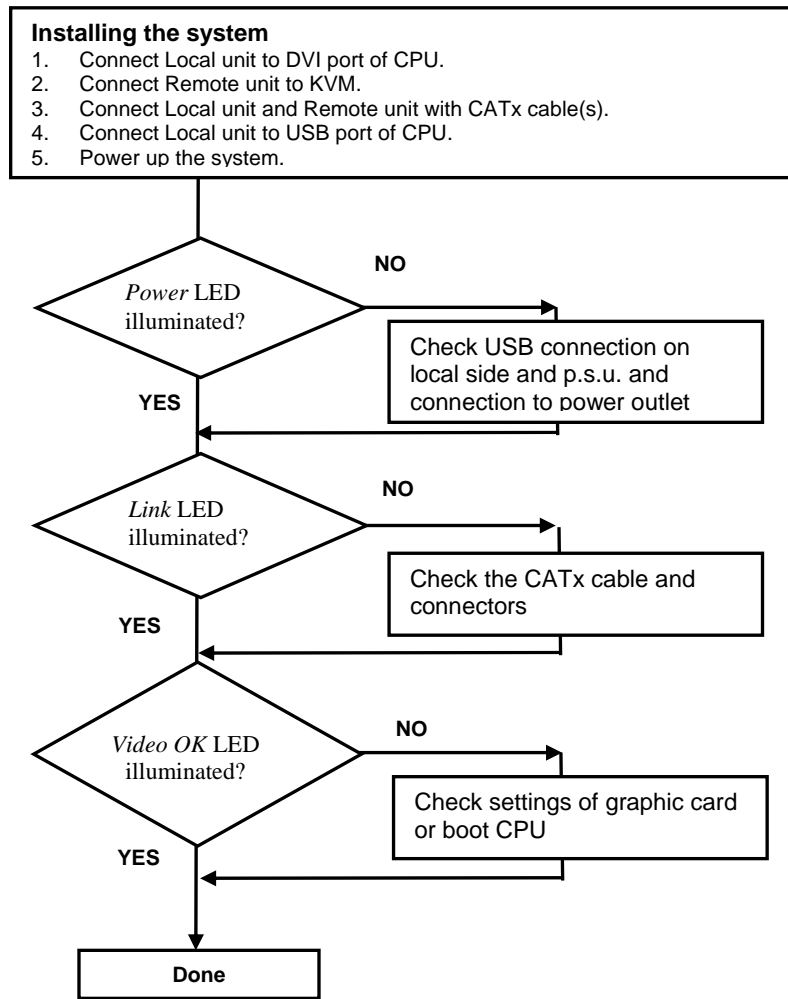


## 1 Quick Setup

This section briefly describes how to install your KVM extender system. Unless you are an experienced user we recommend that you follow the full procedure described in this document. The complete manual can be downloaded from [http://www.ihse.de/pdf/b473-xx\\_e.pdf](http://www.ihse.de/pdf/b473-xx_e.pdf).



## 2 Installation

For first-time users, we recommend that you carry out a test placement, confined to a single room, before commencing full installation. This will allow you to identify and solve any cabling problems, and experiment with the KVM extender system more conveniently.

### 2.1 Package Contents

You should receive the following items in your extender package:

- DSXi KVM Extender pair (Local Unit + Remote Unit)
- 1x 5V DC universal power supply for the DSXi Extender Remote Unit
- 1x German type power cord
- User manual (Quick Setup)
- 1 pc. DVI (1,8m) video cable (DVI-D male-to-male)
- 1 pc. USB (1,8m) cable (USB type A to type B)

**K473-DSH (additionally):**

- 2<sup>nd</sup> pc. DVI (1,8m) video cable (DVI-D male-to-male)
- 2<sup>nd</sup> pc. USB (1,8m) cable (USB type A to type B)

If anything is missing, please contact our Technical Support.

### 2.2 System Setup

To install your DSXi – Extender system:

1. Switch off all devices.
2. Connect your keyboard, monitor(s) and mouse to the Remote unit.
3. Connect the local unit to your computer by using the supplied DVI and USB cable(s).

Please note that the Dual-Head extender K473-DSH has to be connected to the CPU with both USB cables. Each extender board receives its power via its respective USB port.

As an alternative, you can order an additional p.s.u. for the local unit. If you connect the p.s.u. to the local unit, power supply via USB will be automatically disconnected.

4. Connect local unit and remote unit with the CATx cable(s).

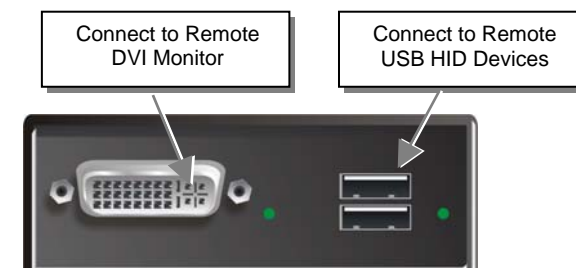
Please verify that ferrites are applied on both ends of the CATx cable(s) close to the device.

5. Connect the 5V power supply to power the unit.

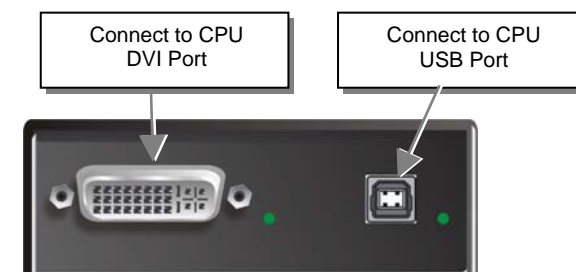
Only use the power supply originally supplied with this equipment or a manufacturer-approved replacement.

6. Power up the system.

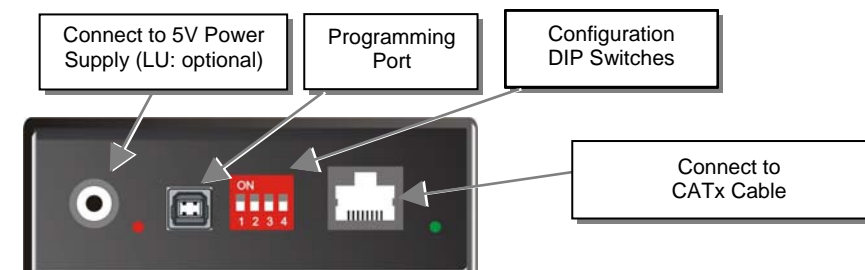
### 2.3 Device Views



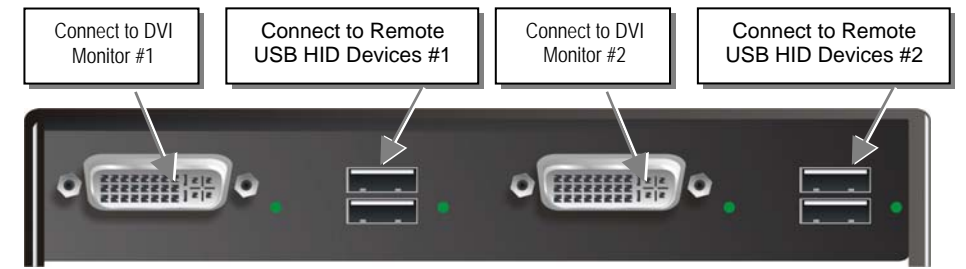
DSXi KVM- Extender Type K473-SSH Remote Unit



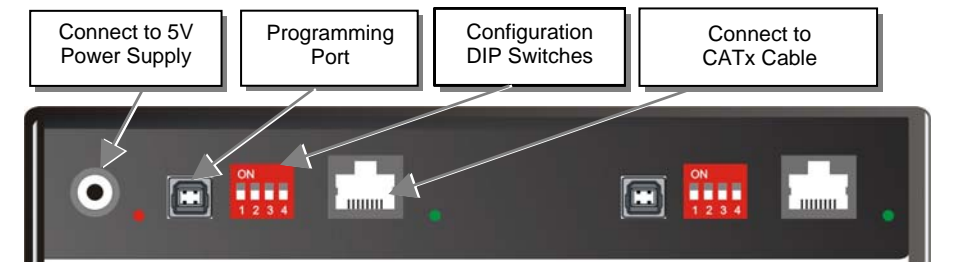
DSXi KVM- Extender Type K473-SSH Local Unit



DSXi KVM- Extender Type K473-SSH Local and Remote Unit

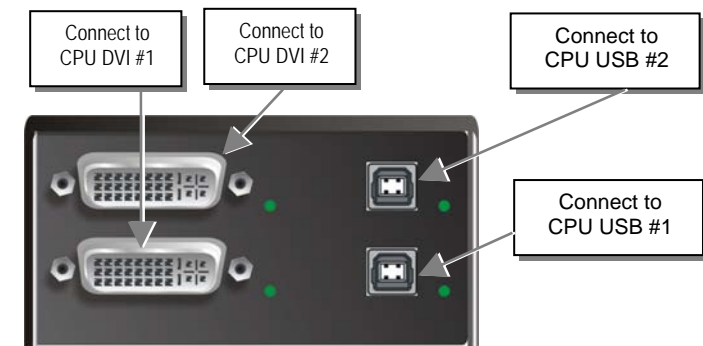


DSXi KVM- Extender Type K473-DSH Remote Unit

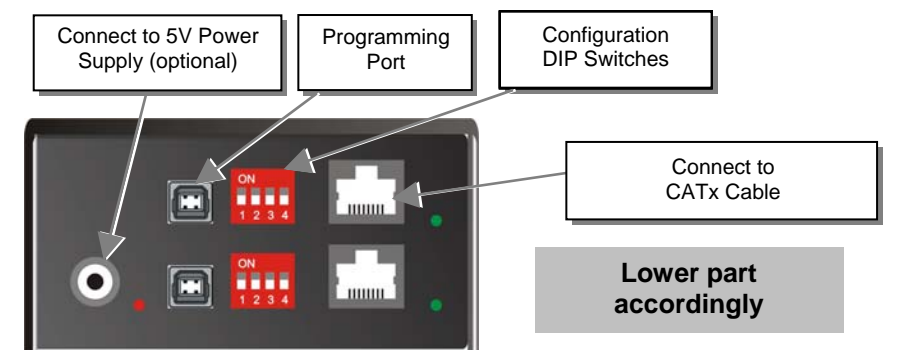


DSXi KVM- Extender Type K473-DSH Remote Unit

Right part accordingly



DSXi KVM- Extender Type K473-DSH Local Unit



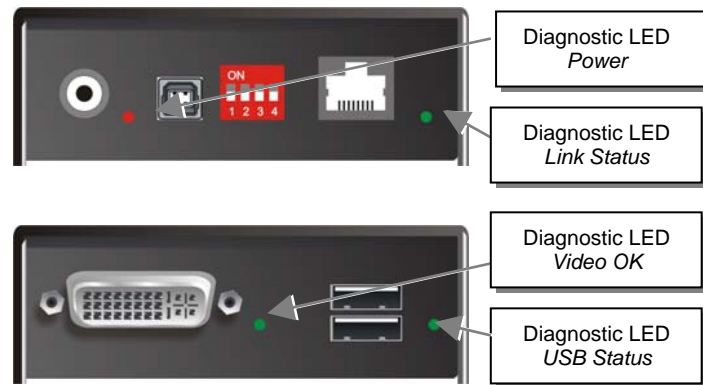
DSXi KVM- Extender Type K473-DSH Local Unit

Lower part accordingly

### 2.4 Diagnostics

Each DSXi KVM-Extender is fitted with four indicator LEDs: Power, Video OK, Link Status and USB Status.

The location of the LEDs is shown below:



Diagnostic LEDs at the DSXi Extender

LED	Appearance	Diagnostics
Power LED (Red LED)	Off	Device not ready
	On	Device ready
Video Okay (Green LED)	Off	No DVI signal from video source detected
	On	DVI signal from video source available
	Blinking	Monitor DDC is being transmitted from Remote
Link Status (Green LED)	Off	No connection via CATx cable
	On	Connection via CATx cable ok
USB Status (Green LED)	Off	No USB connection
	On	USB connection ok

### 3 Service Setup

For application specific settings, you don't need to open the devices. All settings are made via DIP Switches readily accessible from outside.

The location of the DIP Switch is shown below:



#### 3.1 Local Unit

##### Adjustment of monitor resolution

In default configuration, the device adapts automatically to the monitor resolution. This configuration is suitable for almost all conditions and should only be modified if cable length goes to or beyond the specified limits or if image quality is not fully satisfactory.

DIP Switch Position	Function
	Monitor Resolution: Automatic control (Default)
	Monitor Resolution: up to 1280x1024
	Monitor Resolution: larger than 1280x1024
	Configuration for Maximum Distance transmission, independent of Monitor Resolution
	Reserved – currently w/o function
	Operation mode: Standard operation (Default)
	Operation mode: Firmware Update Set only during Firmware Update, if required

#### 3.2 Remote Unit

##### Adjustment of cable length

In default configuration, the device is preset for long distance transmission. This configuration is suitable for many cable lengths and should only be modified if cable length is very short or if image quality is not fully satisfactory.

DIP Switch Position	Function
	Cable length exceeds 30m (Default)
	Cable length exceeds 20m
	Cable length exceeds 10m
	Cable length less than 10m
	Reserved – currently w/o function
	Operation mode: Standard operation (Default)
	Operation mode: Firmware Update Set only during Firmware Update, if required

#### 3.3 Loading the DDC Information from the Remote Monitor

- Connect all cables between CPU and Local Unit and between Remote Unit and monitor (Dual-Head: BOTH monitors). Connect Local and Remote Unit with the interconnection cable. Power up the CPU, the Local Unit, the Remote (cables to the CPU connected) and the Monitor
- While the system is powered, pull the Monitor Cable(s) from the Remote Unit (Dual-Head devices: BOTH Monitors!) – The Link LEDs must still be illuminated.
- Switch ON the Monitor(s) (if switched OFF, Dual-Head devices: BOTH Monitors!)
- Plug the Video-Cable of the Remote Monitor(s) into the remote unit (Remote and Local Unit powered! - Dual-Head devices: BOTH Monitors!)
- The DDC Information of the Remote Monitor(s) is read automatically, transferred to the Local Unit and stored into the DDC-EPROM
- After a successful programming of the DDC EPROM, the 'Video-OK' LED at the Local Unit is blinking rapidly for approx. 1 second
- With some graphic cards, it's required, to reboot your CPU to make the graphic card accepting the new DDC information from the Local Unit.
- Done

### 4 Troubleshooting

#### 4.1 Monitor

*There is no picture.*

- Check settings for monitor resolution and cable length.
- Check the power supply connection at the Local and Remote unit. Is the Power LED at the Local and Remote unit illuminated? If not, the power supply may be damaged or there may be an internal error.
- Check if the Interconnection cable is connected at the Local Unit and the Remote Unit. Is the Link Status LED illuminated? If not, there may be a problem with the Interconnection cable.
- Are there errors through data transmission over CATx Cable? Is the Data Error LED illuminated or blinking?
- Video Okay LEDs are off: CPU does not provide a video signal – Check settings of the graphic card. For verification, connect monitor directly to CPU.

#### 4.2 USB-Keybaord/USB-Mouse

*Your USB-keyboard/USB-mouse does not work*

- Although we tried to design the devices as transparent as possible, we can't ensure that all devices are running. Please check on page **Fehler! Textmarke nicht definiert.** the list of tested devices.

#### 4.3 USB-HID Device

*Your USB-HID device does not work*

- Although our interface supports HID devices, we can't ensure that every connected device is running. In case of a malfunction please contact our technical support

#### 4.4 Other USB Devices

*Your USB- device does not work (DSXi without USB 2.0 only)*

- You have connected a non-HID device. Only HID devices are supported. All other devices are ignored.

# DSXi DVI KVM Extender

Type:  
**K473-SSH**  
**K473-DSH**

(Quick Setup)