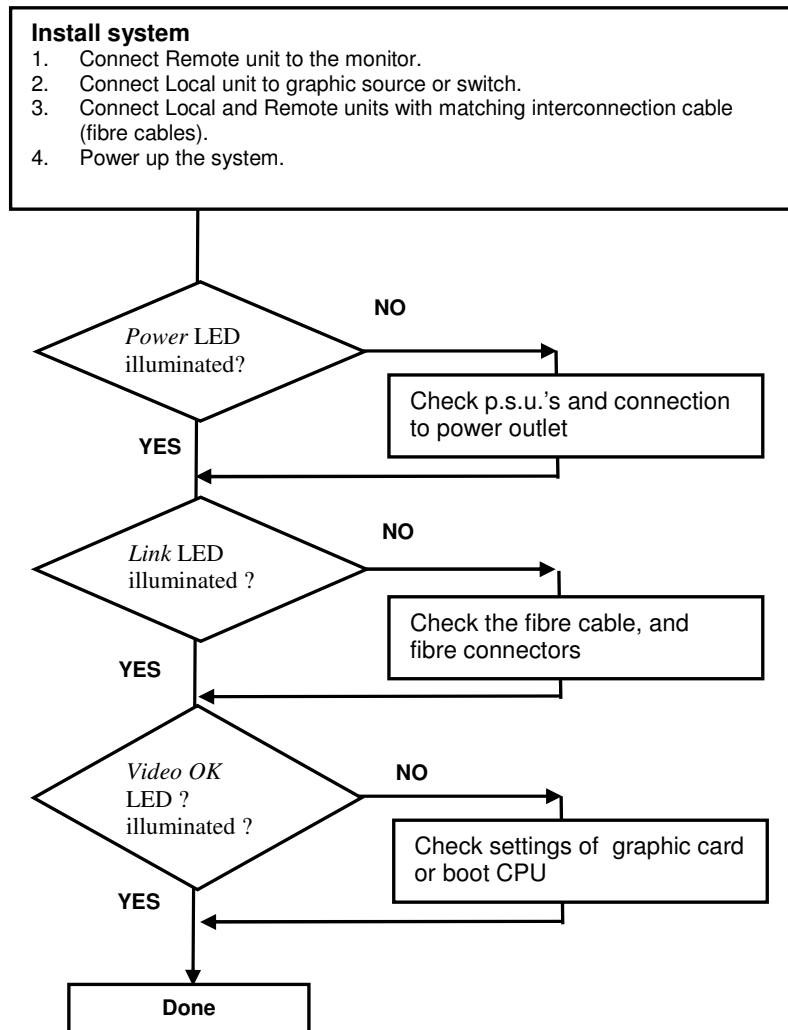


1 Quick Setup

This section briefly describes how to install your KVM extender system. Unless you are an experienced user, we recommend that you follow the full procedures described in the rest of this manual. You can download the manual on: http://www.ihse.de/pdf/b466-xx_e.pdf.



2 Installation

For first-time users, we recommend that you carry out a test placement, confined to a single room, before commencing full installation. This will allow you to identify and solve any cabling problems, and experiment with the Media extender system more conveniently.

2.1 Package Contents

You should receive the following items in your extender package (all types):

- DVXi/ME Media-Extender- pair (Local Unit + Remote Unit)
- 2x 5V DC universal power supply for the DVXi/ME - Extender
- 2x German type power cord
- User manual (Quick Setup)
- DVI-I (1,8m) video cable (DVI-I dual link male-to-male)

If anything is missing, please contact Technical Support

2.2 System Setup

To install your DVXi/ME – Extender system:

1. Switch off all devices.
2. Connect your monitor(s) and speakers to the Remote unit (depending on device type).
3. Using the supplied DVI-cable(s), connect the local unit to the computer
4. Connect the 5V power supply to power the unit.



Only use the power supply originally supplied with this equipment or a manufacturer-approved replacement.

5. For a dual access system, connect the monitor for the Local console to the appropriate port on the Local unit.
6. Connect the interconnect cable to the INTERCONNECT socket(s)
7. Power up the system.

2.3 Interconnection Cable Requirements

To connect the Local and Remote units you will need:

- **DVI:** Connect the supplied DVI CPU cable set to your CPU (Media.- Switch, etc.). Please ensure that the connection is tension-free!
- **Fibre Cables:**
 - **Multimode:** Two fibers 50µm or 62.5µm. E.g. I-V(ZN)H 2G50 (In house patch cable) or I-V(ZN)HH 2G62,5 (In house Breakout cable) or I/AD(ZN)H 4G50 (in house OR outdoor Breakout cable, stress resistant) or A/DQ(ZN)B2Y 4G62,5 (outdoor cable, stress resistant with protection against animal biting) All notations acc. VDE specification.
 - **Singlemode:** Two fibers 9µm. E.g. I-V (ZN)H 2E9 (In house patch cable) or I-V(ZN)HH 2E9 (In house Breakout cable) or I/AD(ZN)H 4E9 (in house OR outdoor Breakout cable, stress resistant) or A/DQ(ZN)B2Y 4G9 (outdoor cable, stress resistant with protection against animal biting) All notations acc. VDE specification.

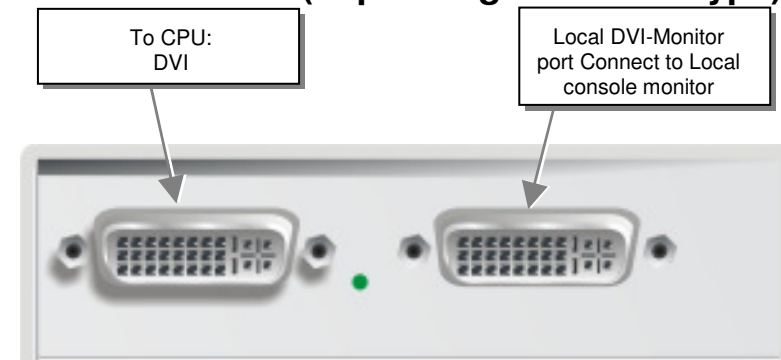


A point to point connection is required. Having one or more patch panels in the line is possible and allowed. Not allowed is a connection from the fibre link interface to any other products, especially telecommunications or network equipment.

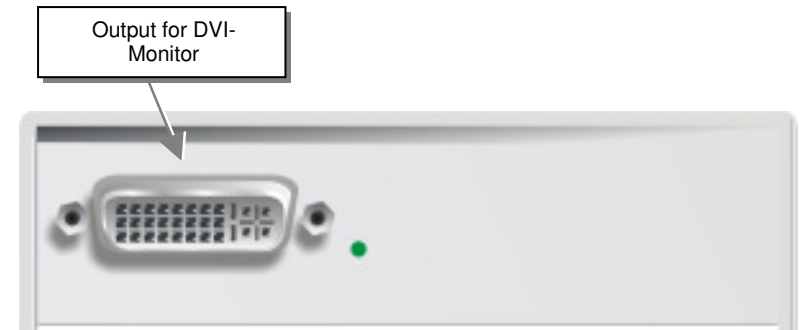
- **Power Supply**

Connect the supplied 5V/DC power supplies to the **Plug** terminal on the rear of both Local and Remote units.

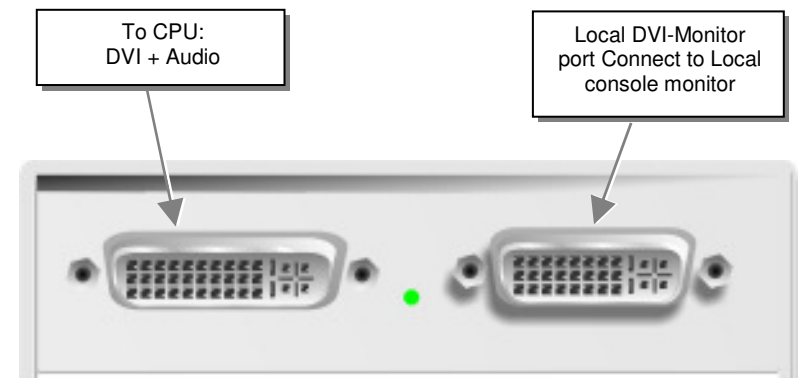
3 Device view (depending on device type)



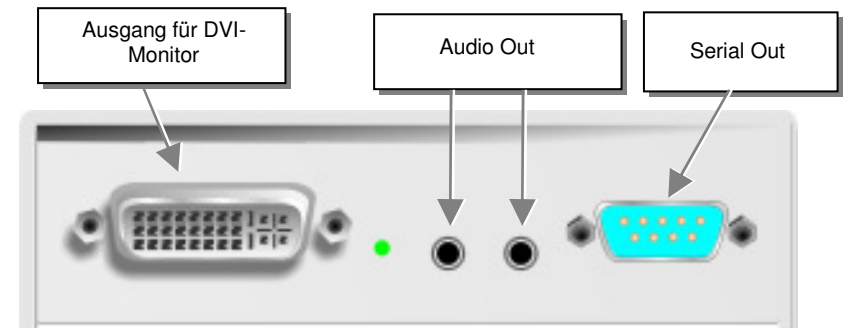
K466-0M, K466-0S, K467-0M, K467-0S, 468-0M and K468-0S Local Unit



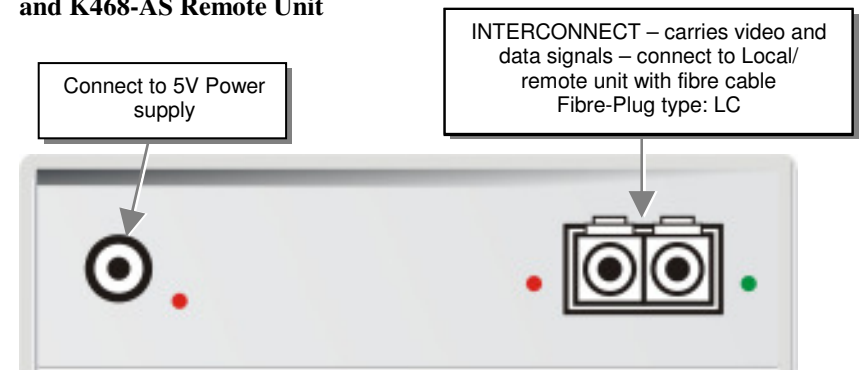
K466-0M, K466-0S, K467-0M, K467-0S, 468-0M und K468-0S Remote Unit



DVXi/ME Media-Extender Type K466-AM, K466-AS, K467-AM, K467-AS, 468-AM and K468-AS Local Unit



DVXi/ME Media-Extender Type K466-AM, K466-AS, K467-AM, K467-AS, 468-AM and K468-AS Remote Unit

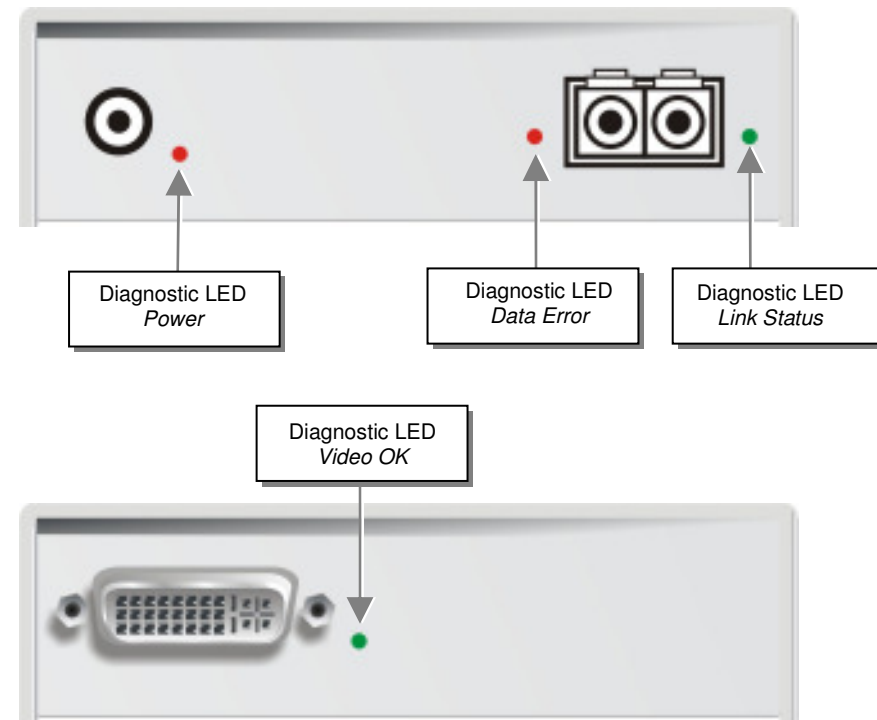


DVXi/ME Media-Extender Type K466-0M, K466-AM, K466-0S, K466-ASW, K467-0M, K467-AM, K467-0S, K467-AS, K468-0M, K468-AM, K468-0S and K468-AS Local Unit und Remote Unit

3.1 Diagnostic LEDs

Each DVXi/ME Media-Extender is fitted with four indicator LEDs: *Power*, *Video OK*, *Data Error*, *Link Status*: The *Power* LEDs are next to the Power socket.

The location of the LEDs is shown below:



Diagnostic - LEDs at DVXi/ME - Extender

LED	Appearance	Diagnostics
Power LED (Red LED)	Off On	Device not ready Device ready
Video Okay (Green LED)	Off On	No or invalid video signal detected Device ready
Link Status (Green LED)	blinking On	No fibre connection Device ready
Data Error (Red LED)	Off blinking / On	Device ready Errors through data transmission over fibre Cable (Cable too long, too high attenuation or too much EMI interferences)

4 Audio/serial option

No setting up or user adjustments are required. Please note that on the dual access model, the serial link is always active Please bear in mind that the Remote Unit's serial port is wired as DTE (i.e. the same as that on a PC). To connect a serial printer (or other DTE rather than DCE device) to the Remote Unit, you will need a Null-Modem (crossover) cable between the Remote Unit and the printer. Select Xon/Xoff software flow control on the printer and PC. A serial Touchscreen may be plugged directly into the Remote Unit.

5 Troubleshooting

Monitor

There isn't a picture.

Check the power supply connection at the Local and Remote unit. Is the *Power* (Red LED) at the Local and Remote unit illuminated? If not, the internal power-supply may be damaged or there may be an internal error.

Check that the Interconnection cable is connected at the Local Unit and the Remote Unit. Is the *Link Status* LED illuminated? If not, there may be a problem with the Interconnection cable:

Are there Errors through data transmission over fibre Cable (Cable too long, too high attenuation or too much EMI interferences)? Is the *Data Error* LED illuminated or blinking? If yes, check cable length and environment.

Video Okay LED is dark: CPU does not provide a video signal – Check settings of the graphic card. Try out, connecting a monitor to the local output, to see, whether there is a signal or not.

DVXi/ME-xM /-xS DVI-Media-Extender

- Type:
- K466-0M**
 - K466-AM**
 - K466-0S**
 - K466-AS**
 - K467-0M**
 - K467-AM**
 - K467-0S**
 - K467-AS**
 - K468-0M**
 - K468-AM**
 - K468-0S**
 - K468-AS**

(Quick Setup)